

1 Before You Begin

WARNING: Before you set up and operate your Dell PowerVault system, review the safety instructions that shipped with your system.

Dell Software License Agreement

- Before using your system, read the Dell Software License Agreement that came with the system.
- You must consider any CD, DVD, or diskette set of Dell installed software as BACKUP copies of the software installed on your system's hard drive.
- If you do not accept the terms of the agreement, please call the customer assistance telephone number. For customers in the United States, call 800-WWW-DELL (800-999-3355). For customers outside the United States, visit support.dell.com and select your country or region from the bottom of the page.

Documentation

For documentation and information updates, see support.dell.com/manuals.

Verifying Package Contents

Verify that all components listed on your packing slip are available. Save all documentation and accessories.

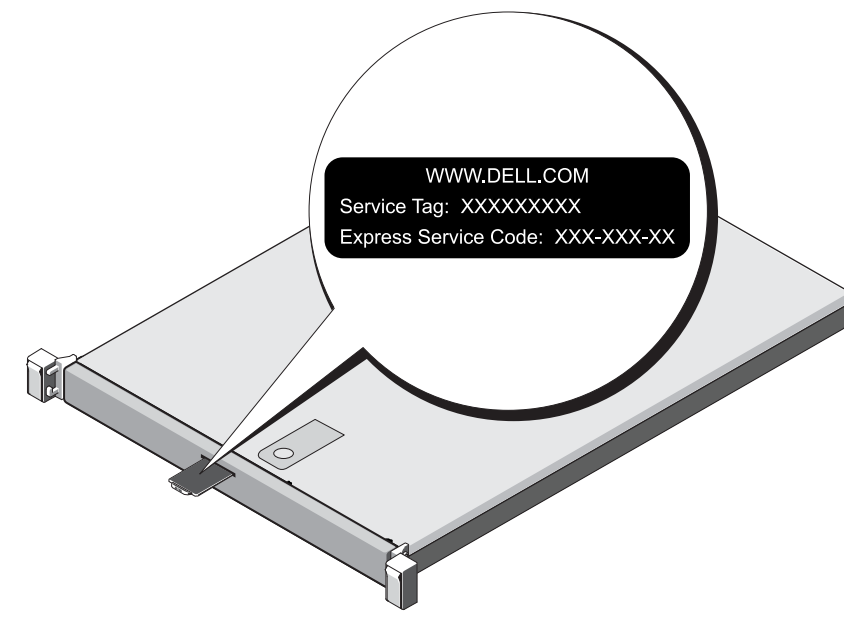
Installing the System in a Rack

This system requires a properly grounded electrical outlet, a compatible rack, and a rack installation kit.

Locating Your System's Service Tag

- Your system is identified by a unique Express Service Code and Service Tag number. The Express Service Code and Service Tag can be found by pulling out the information tag located at the front of your system.
- This information is used by Dell to route support calls to the appropriate personnel.

NOTE: The illustrations in this document are not intended to represent a specific NAS solution.



Default Password

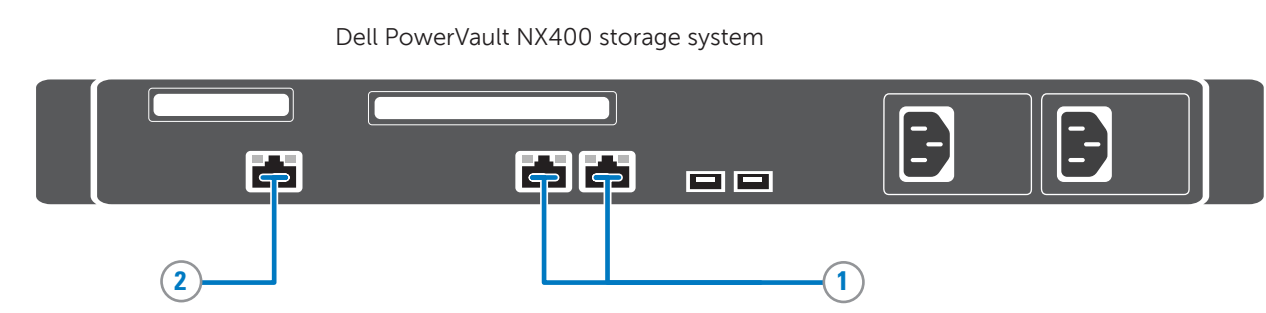
The default password for the network-attached storage (NAS) system is **Stor@ge!**

Default System Name

Your system is configured with a default system name of D<ServiceTag> where <ServiceTag> is a unique five- to seven- digit alphanumeric (letter and number) code, found on a bar-coded label affixed to your system.

**Check for documentation and information updates on support.dell.com/manuals.
Always read the updates first because they often supersede information in other documents.**

2 Cabling the System or Solution Using iSCSI



- 1 Gb1 and Gb2 to Ethernet switch
- 2 iDRAC Enterprise port to Ethernet switch for lights-out management (optional)

3 Powering-Up and Connecting Your NAS Solution

Power-Up Procedure

You must first turn on the storage arrays and additional expansion enclosure(s), if any. After the storage arrays and enclosure(s) are initialized, turn on the PowerVault NX400 network-attached storage (NAS) solution.

Connection Procedure

Using a Remote Desktop

If Dynamic Host Configuration Protocol (DHCP) and Domain Name System (DNS) are implemented on your network, your system automatically configures the network settings. You can launch Remote Desktop from a client and remotely access the NAS system using the default system name. For example, in the **Remote Desktop Connection** window, type D<ServiceTag>, where <ServiceTag> is a unique five- to seven- digit alphanumeric (letter and number) code, found on a bar-coded label affixed to your system.

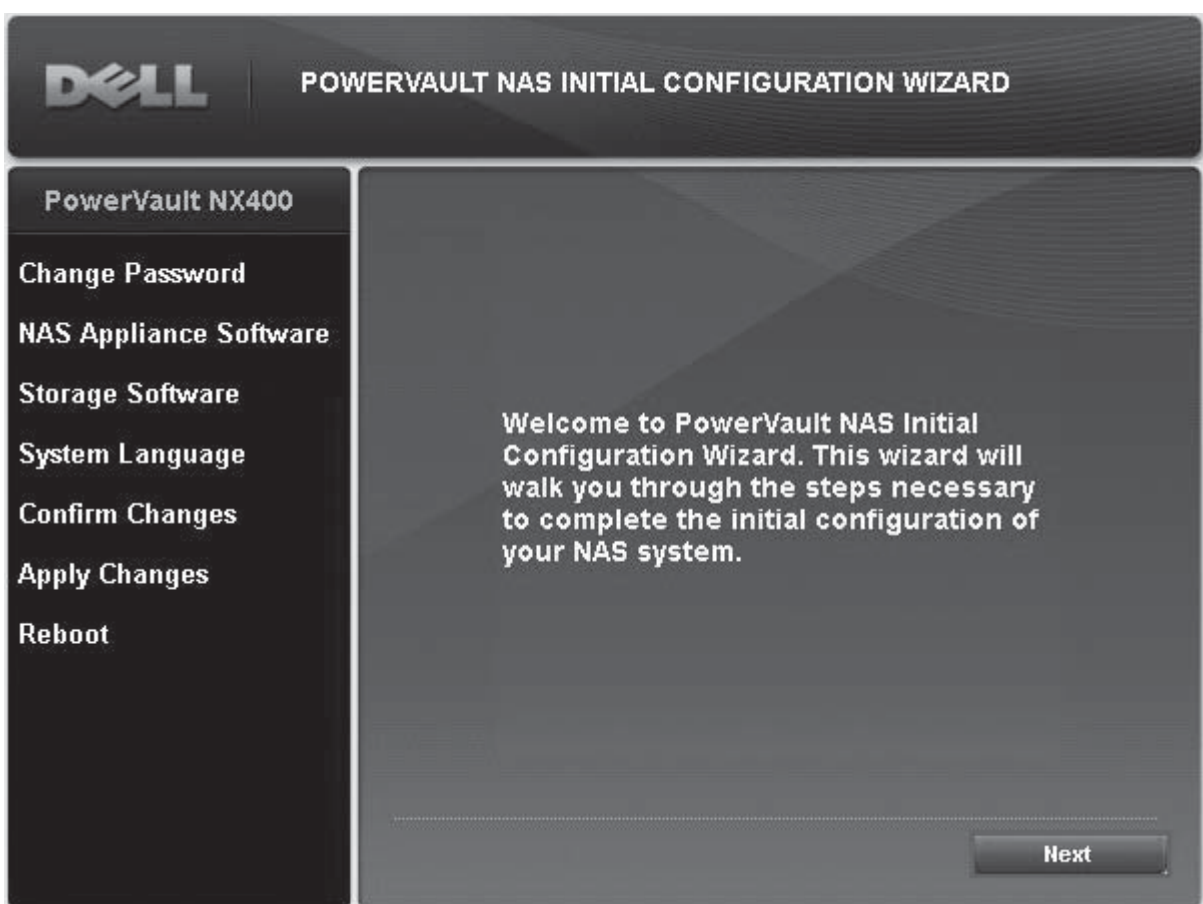
Using Keyboard, Video, and Mouse

Connect a keyboard, monitor, and mouse directly to the NAS system for local administration.

NOTE: You can also use the optional iDRAC interface for remote administration. For information about initial setup, configuring iDRAC, and console redirection, see the *Integrated Dell Remote Access Controller 7 User's Guide* at supportdell.com/manuals.



4 Initial Configuration



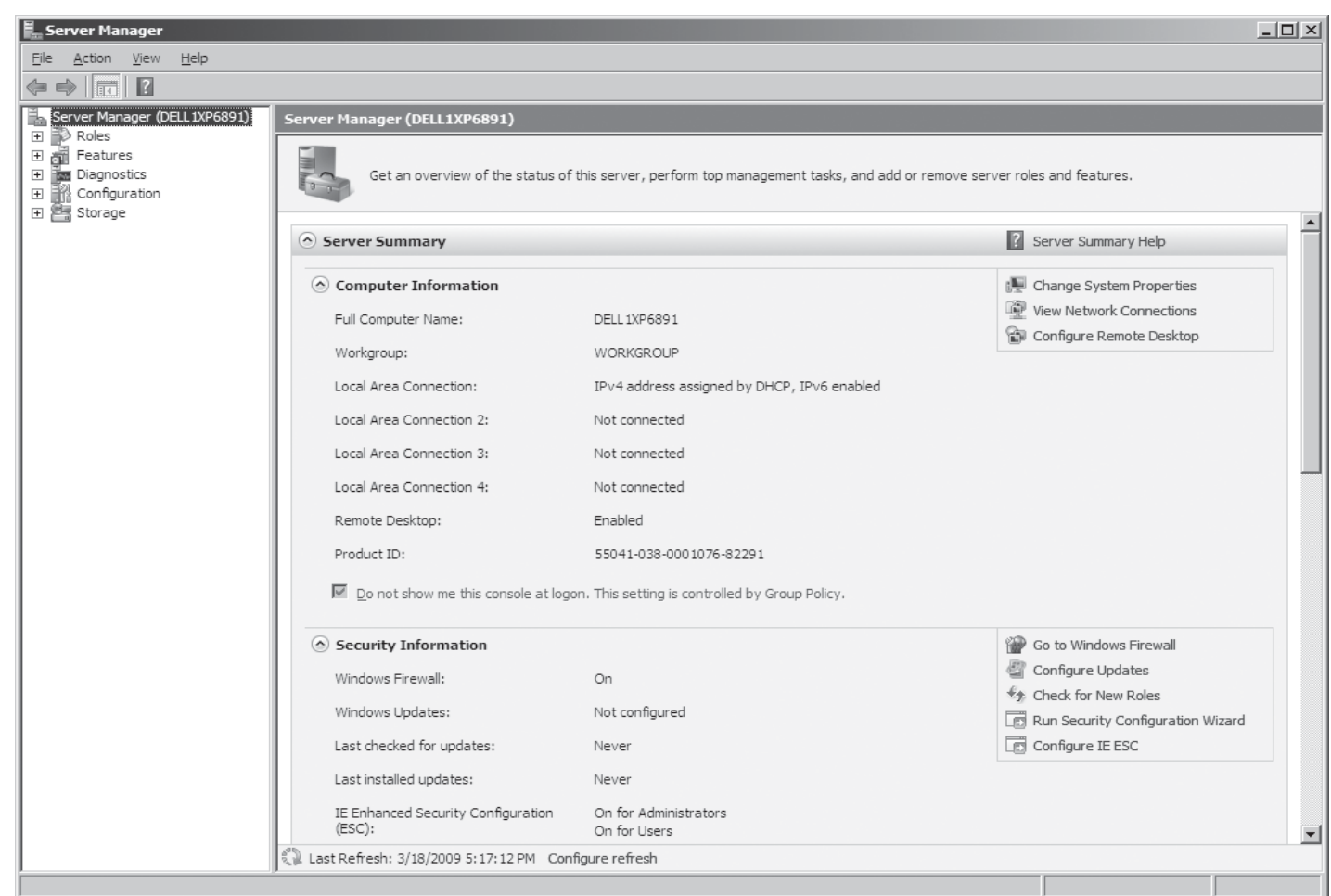
The **PowerVault NAS Initial Configuration Wizard** runs when you first log on to the PowerVault NX400 storage system.

The initial configuration tasks include:

- Changing the local administrator default password
- Selecting the system language
- Confirming the settings

The **PowerVault NAS Initial Configuration Wizard** also configures NAS specific software. After the wizard is complete, you are prompted to reboot the system.

5 System Configuration



The **Server Manager** window opens when the administrator logs on to the system. Using **Server Manager**, you can perform the following tasks:

- Initial system configuration
- Configure networking
- Change the computer name
- Specify the language and regional settings
- Change the date and time settings

6 Additional Information

Utility Share

Utility share is a Server Message Block (SMB) share preconfigured on your system. The utility share allows you to view data either locally or remotely. To access the utility share, type \\D<ServiceTag>\NASUtil1s\ where <ServiceTag> is a unique five- to seven- digit alphanumeric (letter and number) code, found on a bar-coded label affixed to your system.

Documentation

For documentation and information updates, see support.dell.com/manuals.

Dell OpenManage Server Administration

You can monitor your system remotely using **Dell Open Manage Server Administrator**. To access **Server Administrator**, connect to the secure port, 1311, of your NAS system.

For example, type: `https://D<ServiceTag>:1311` where <ServiceTag> is a unique five- to seven- digit alphanumeric (letter and number) code, found on a bar-coded label affixed to your system.